

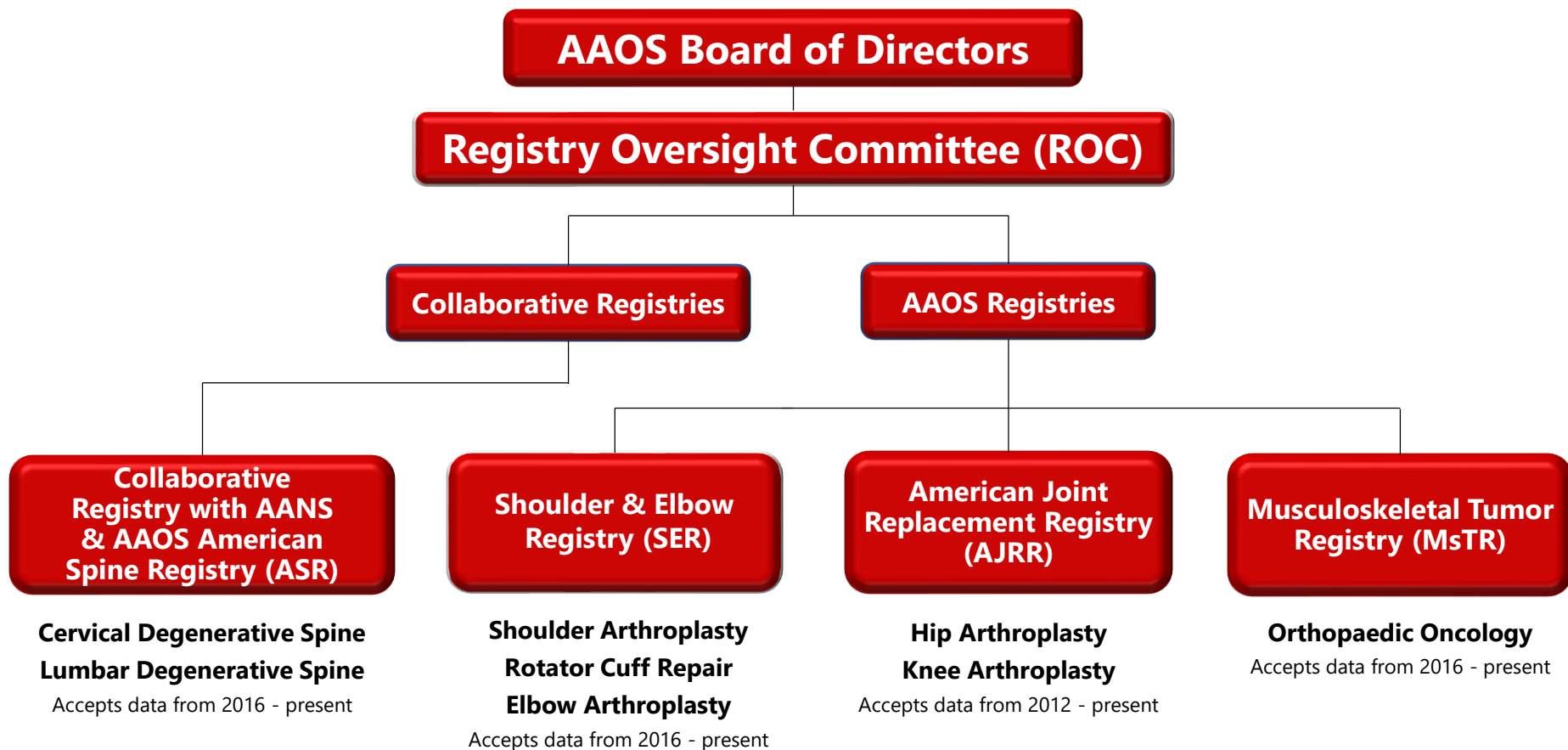
Annual Sunset Cycle

Data Specifications Updates for 2020

Agenda

- Registry Program Overview
- Annual Sunset Cycle Introduction
- Overview of Data Elements
 - Updated Data Elements
 - New Data Elements
 - New Data Elements for the Joint Commission's *Advanced Certification for Total Hip and Total Knee*
- Required Status Definitions
- Submission Best Practices
- Q&A

AAOS Family of Registries



Annual Data Specification Sunset Cycle

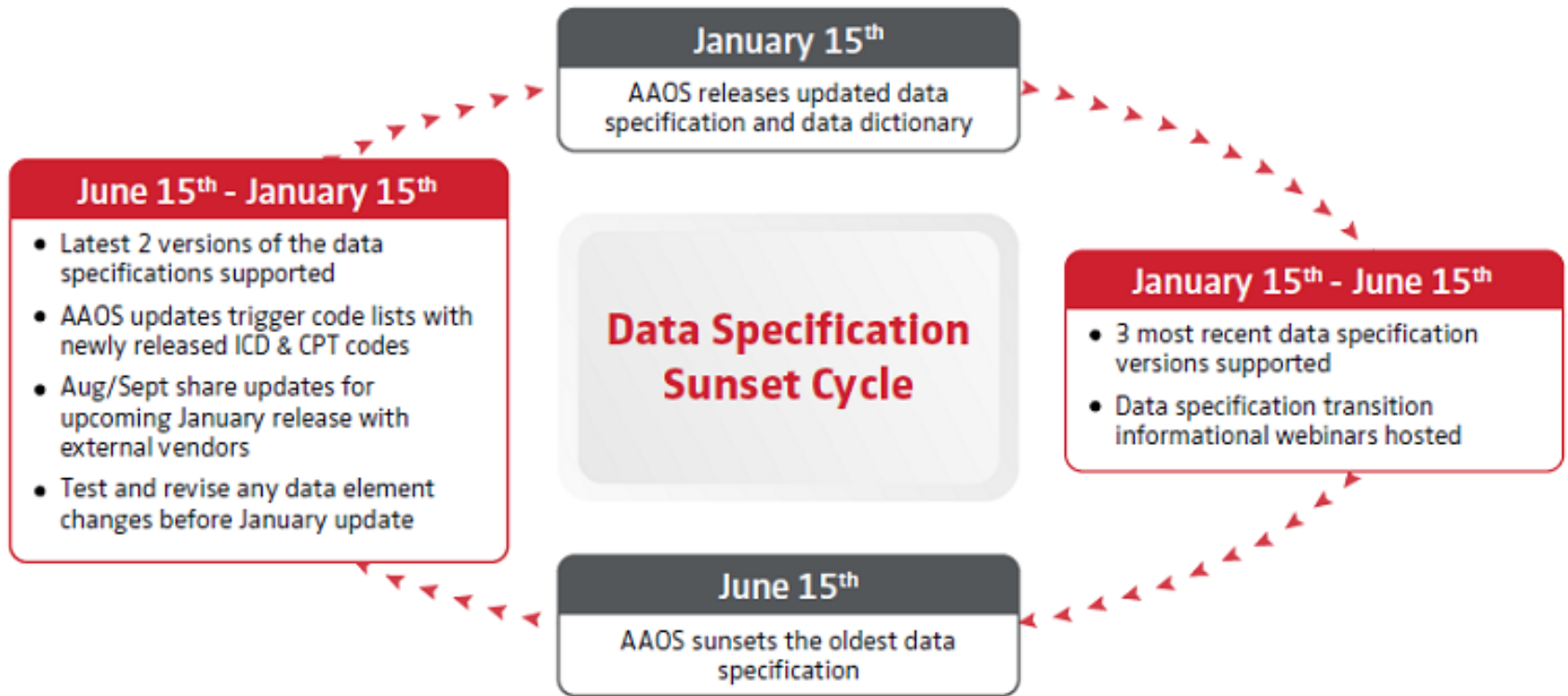
Updating data specifications is necessary to:

- Improve quality of data collected
- Reduce data entry burden
- Grow with the orthopaedic profession

*The **AAOS Registry Data Specification Sunset Cycle** simplifies the transition of data specifications by informing you of when our new data specifications will be released and when we plan to sunset the oldest data specifications.*

This release and sunset cycle will occur *annually*.

Registry Data Specification Sunset Cycle



Rationale for Data Element Updates

- 2020 Sunset Cycle addressed elements with low response rates or where data is submitted in an unusable format.
- Registry Program Staff reviewed data elements and response rates with the Technology Team to identify areas for improvement.
- The Registry Analytics Team presented this information to surgeon leadership to begin the discussions of how to continue to improve the quality of data within the Registry.

Completing the Update

- Worked with surgeon leaders to update acceptable values in efforts to improve response rates and overall quality of the data submitted to the Registry.
- Sought feedback from surgeons and Registry participants in building these changes.
- Collaborated with The Joint Commission to add data elements now required for the Advanced Hip and Knee Certification.

Disseminating Information: Updates for 2020

The AJRR Data Committee has approved the additions and updates for the 2020 Sunset Cycle

- Updates were provided for Registry Program Staff and surgeon leadership
- Resources have already been provided to AAOS Technology and Data Services Team
- Resources will be provided for Registry Users and Vendors through written materials and webinars
- Marketing and Communications Team will assist with disseminating resources through various marketing avenues

Decreasing Data Burden

- AAOS has partnered with technology vendors to facilitate the data submission process
- AAOS works with vendors to provide updates and integrate changes to the data specifications
- Direct data submission and management can be handled by a technology provider with sites able to fix rejected files

AAOS Registry Program Authorized Vendor

American Joint Replacement Registry
Shoulder & Elbow Registry

AAOS
AMERICAN ACADEMY OF
ORTHOPAEDIC SURGEONS

Registry Program
Improving Orthopaedic Care Through Data



Data Elements

- Revised Data Elements
- New Data Elements
- Joint Commission Elements

Revised Data Elements

These are existing elements with changes for 2020

Current Data Element Name	2020 Updates to Data Element Name	Registry
Surgical Approach	Surgical Approach Hip	AJRR
	Surgical Approach Knee	AJRR
Technique Hip	Surgical Technique Hip	AJRR
Technique Knee	Surgical Technique Knee	AJRR

- These are existing elements in AJRR with updates to data element name and acceptable values for 2020.
- *Surgical Technique* for Hip and Knee will only apply to revision procedures.

Revised Data Elements

These are existing elements with changes for 2020

These elements were revised to better define the beginning and end of a surgical procedure:

Current Data Element Name	2020 Updates to Data Element Name	Registry
ProcedureStartTime	Incision Time	AJRR and SER
ProcedureEndTime	Skin Closure Time	AJRR and SER
ProcedureDuration	N/A (Element will be removed and will now be calculated from IncisionTime and SkinClosureTime)	AJRR and SER

While the Registry will continue to support the three current versions of specifications until June 2020, the new data specifications will have different element names to identify start/end and *ProcedureDuration* will not be listed. Procedure Duration is now a calculated value, subtracting *IncisionTime* from *SkinClosureTime*.

Existing Data Elements with Changes to Business Rules

Data Elements	Changes to Business Rules
Trainee	Will update to <i>allow multiple response format</i> ; this will allow sites to identify if a resident and fellow are present during a procedure
Pat_Height_ftin	Will be required; was previously conditional
Pat_Weight_lbs	Will be required; was previously conditional
Pat_BMI	Will now require calculation of BMI from submitted height and weight; calculation formulas for standard and metric measure are provided in the

New Data Elements

These are new additions to the data specs for 2020

Data Element	Definition	Data Type	Required	Format of Element	Registry
OR Entry Time	Time that patient (wheels-in) entered operating room, to the nearest minute (using 24 hour clock)	Formatted Numeric; Time	Conditional	HH:MM:SS	AJRR and SER
OR Exit Time	Time that patient (wheels-out) leaves the operating room, to the nearest minute (using 24 hour clock).	Formatted Numeric; Time	Conditional	HH:MM:SS	AJRR and SER
Tourniquet Use*	Was a tourniquet used during the procedure?	Pick list; Numeric	Yes	1-3 (1=Yes; 2=No; 3=Not Reported)	AJRR

**Tourniquet Use is limited to AJRR only*

New Data Elements for The Joint Commission

- These elements were proposed by the Joint Commission to meet the requirements for *The Advanced Hip and Knee Certification*
- Registry Analytics and Clinical Quality & Value Teams have worked with the TJC to best structure these elements to limit the data entry burden
- Elements will exist in the Procedure Layout tab and will be required for sites participating in the certification, but optional for all other sites

What Information is The Joint Commission Looking For?

Measure	Definition
Regional Anesthesia	Patients undergoing a total hip or total knee replacement with regional anesthesia attempted or performed. Regional anesthesia includes spinal and epidural blocks, as well as peripheral nerve blocks.
Postoperative Ambulation on Day of Surgery	Patients undergoing total hip or total knee replacement who ambulated postoperatively the day of surgery or ambulated in the PACU or within 4 hours of discharge from the PACU.
Discharge to Home	Patients discharged to home following total hip or total knee replacement.
	If an opt out is deemed necessary, an additional data element to allow for “reason for not” will need to be added.

New Data Elements for The Joint Commission

Measure	Element Name	Required (for TJC reporting)	Acceptable Data Values and Format
TJC-Regional Anesthesia	Rgnl_Ansth_Exemption	Yes	1=Attempted and failed, 2=Not attempted, 3=Contraindicated, 4=Not indicated, 5=Unknown, 6=Not reported
TJC-Ambulation	Ambulation	Yes	1=Yes, ambulation day of surgery or 4 hours from PACU discharge; 2=No, ambulation day of surgery or 4 hours from PACU discharge; 3=No, other medical factors preventing ambulation; 4=Unknown; 5=Not reported
TJC-Discharge Home	Discharge_Exclusion	Yes	1=Yes, 2=No, 3=Unknown, 4=Not reported
TJC-Discharge Home	Admit_Source	Yes	1=Home, 2=Residents of other healthcare facilities, 3=Other, 4=Unknown, 5=Not reported

Summary of Data Elements in the 2020 Data Specifications Update

Data Element Name	AJRR	SER
OREntryTime/ORExitTime	X	X
IncisionTime/SkinClosureTime	X	X
SurgicalApproachHip	X	-
SurgicalApproachKnee	X	-
SurgicalTechniqueHip	X	-
SurgicalTechniqueKnee	X	-
Tourniquet Use	X	-
Trainee	X	X
Pat_Height_ftin/Pat_Weight_lbs	X	X
Pat_BMI	X	X
All Joint Commission Elements	X	-

Required Status Definitions

Status	Definition
Required for Processing	Data is necessary for processing the file. (Example: PatDOB is required to process the file)
Recommended Required	Sites are expected to submit and the data is necessary for review, tracking and reporting purposes; Not reported or NR is a valid response. (Example: Payer_Status)
Optional Data	Data is not required to be submitted for processing, but additional data is valuable for dashboards and reporting. (Example: Trainee)
Conditional Data	Data can only be submitted based on the presence of an element, or the absence. (Example: Sites can only submit DX_2 if DX_1 is submitted)

Submission Best Practices

- Most participants submit monthly
- If this is too frequent for you, we encourage submission at least every 90 days
- Ask your institution's IT about setting up automated reports
- The more often you submit, the more updated your dashboards will be
- Data is processed nightly

Submission Best Practices

- You can monitor data submission uploads and errors by logging into [RegistryInsights™](#)
- On Homepage: Latest file upload last 6 month
 - Tells you when the last file was uploaded
 - Number of cases submitted
 - Number of cases with issues
 - Option to correct & resubmit
- To learn more about correcting cases with issues, follow the instructions in the [How-To Guide: Fix Rejected Data in Uploaded Files to AJRR](#)

Questions?

RegistryAnalytics@aaos.org

Thank You

