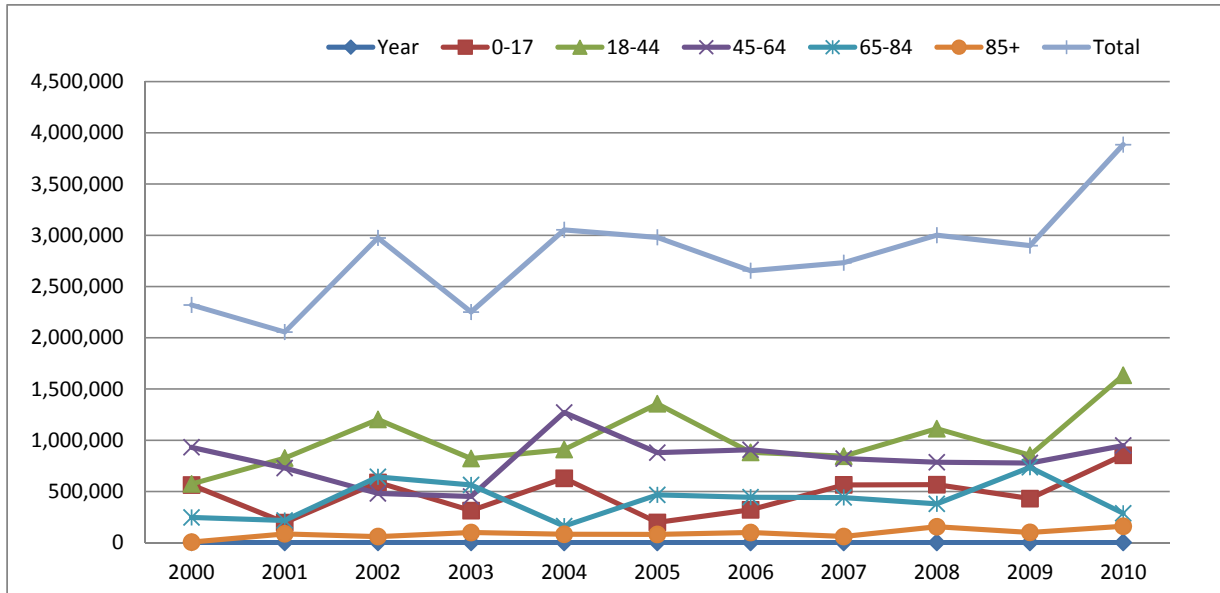


Information About the Ankle

Estimates reflect the number of physician visits¹ for ankle symptoms and complaints (by age group)



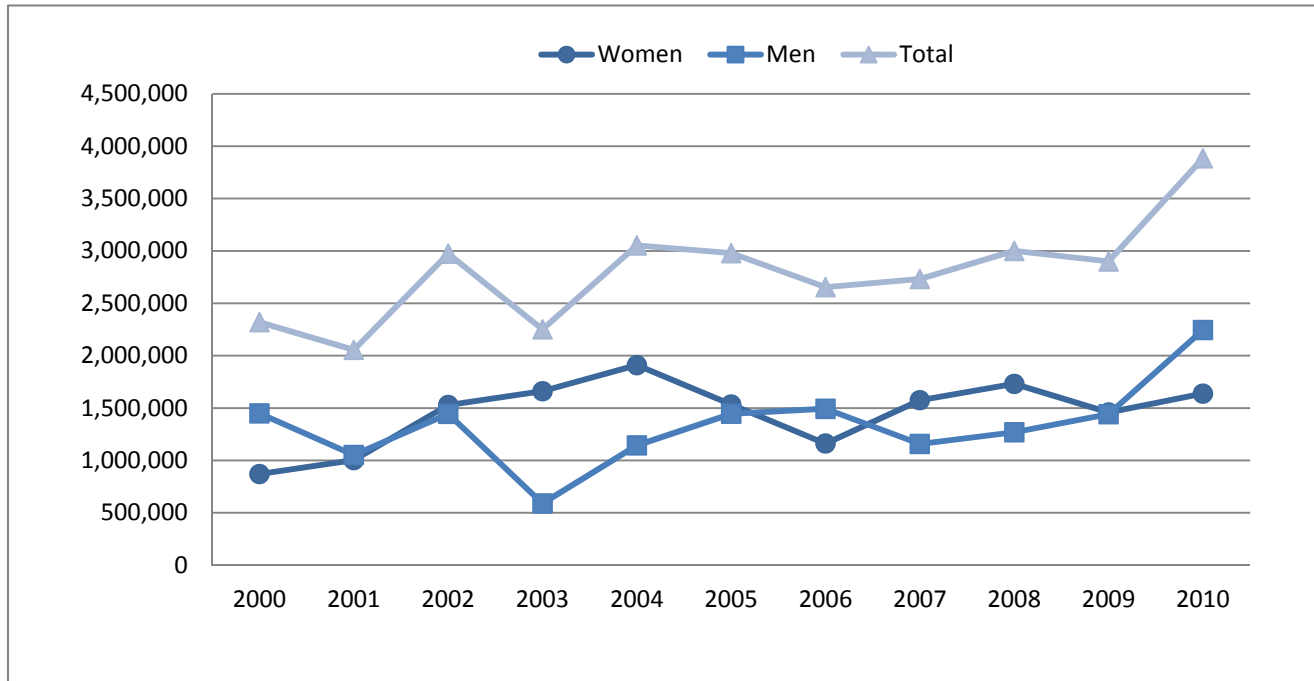
Year	0-17	18-44	45-64	65-84	85+	Total
2000	563,428	573,537	931,249	246,165	5,873	2,320,252
2001	196,648	826,444	729,369	216,945	86,332	2,055,738
2002	588,344	1,202,552	480,869	642,375	59,908	2,974,048
2003	314,059	821,942	451,362	563,763	99,864	2,250,990
2004	628,908	909,225	1,270,262	162,163	82,376	3,052,934
2005	197,995	1,355,964	878,660	466,590	80,410	2,979,619
2006	321,465	882,326	906,705	444,172	99,655	2,654,323
2007	564,397	844,309	821,559	440,956	60,961	2,732,182
2008	566,946	1,112,478	785,523	379,040	156,347	3,000,334
2009	431,030	853,440	778,319	736,094	100,611	2,899,494
2010	854,144	1,633,590	948,490	287,278	160,658	3,884,160

SOURCE: Department of Research & Scientific Affairs, American Academy of Orthopaedic Surgeons. Rosemont, IL; AAOS; November 2013. Physician Visits: Reason for Visit - Based on data from the National Ambulatory Medical Care Survey, 2000-2010; National Center for Health Statistics.

¹Estimates are based on the "principal" or "most important reason" for visit.

Information About the Ankle

Estimates reflect the number of physician visits¹ for ankle symptoms and complaints (by sex)



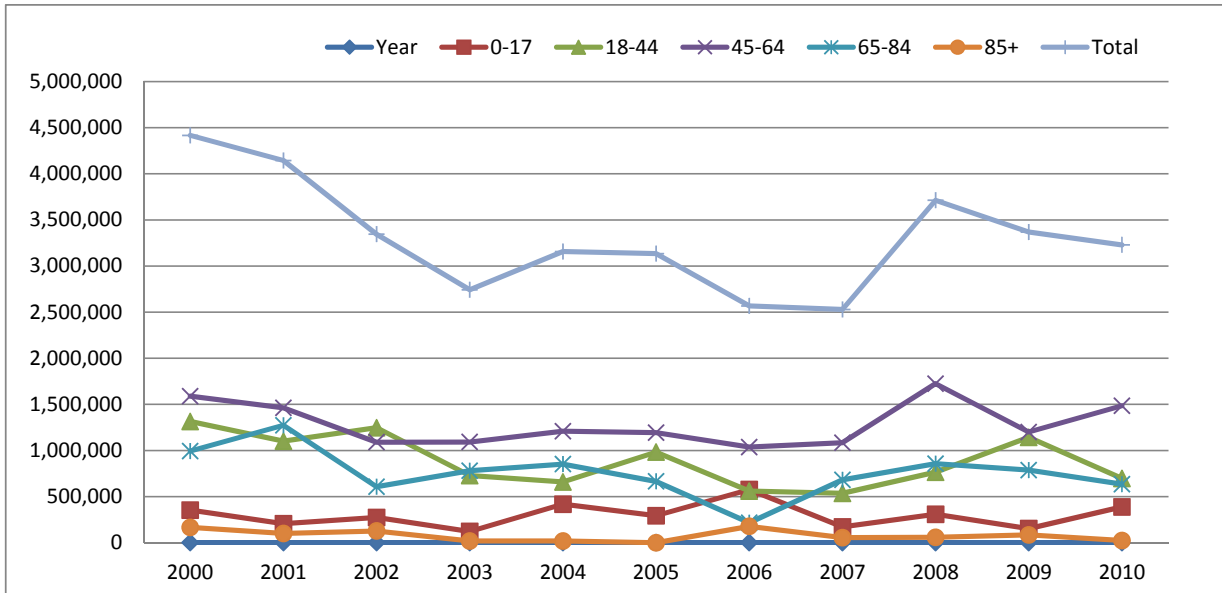
Year	Women	Men	Total
2000	870,840	1,449,412	2,320,252
2001	1,003,838	1,051,900	2,055,738
2002	1,529,303	1,444,745	2,974,048
2003	1,661,230	589,760	2,250,990
2004	1,909,767	1,143,167	3,052,934
2005	1,534,389	1,445,230	2,979,619
2006	1,161,178	1,493,145	2,654,323
2007	1,574,664	1,157,518	2,732,182
2008	1,731,141	1,269,193	3,000,334
2009	1,458,141	1,441,353	2,899,494
2010	1,638,513	2,245,647	3,884,160

SOURCE: Department of Research & Scientific Affairs, American Academy of Orthopaedic Surgeons. Rosemont, IL; AAOS; November 2013. Physician Visits: Reason for Visit - Based on data from the National Ambulatory Medical Care Survey, 2000-2010; National Center for Health Statistics.

¹Estimates are based on the "principal" or "most important reason" for visit.

Information About the Arm

Estimates reflect the number of physician visits¹ for arm symptoms and complaints (by age group)



Year	0-17	18-44	45-64	65-84	85+	Total
2000	353,159	1,314,640	1,588,828	994,051	165,637	4,416,315
2001	206,246	1,101,721	1,462,536	1,272,824	100,537	4,143,864
2002	274,083	1,247,623	1,089,836	606,872	127,306	3,345,720
2003	122,213	728,543	1,092,044	780,590	18,647	2,742,037
2004	417,895	659,522	1,208,437	852,343	19,204	3,157,401
2005	293,463	982,547	1,193,433	665,189	0	3,134,632
2006	576,438	559,903	1,036,613	216,406	177,467	2,566,827
2007	171,537	535,705	1,084,372	682,044	55,519	2,529,177
2008	308,841	764,916	1,724,287	856,947	58,392	3,713,383
2009	153,265	1,143,331	1,199,875	787,597	85,187	3,369,255
2010	388,182	697,004	1,485,104	634,839	24,140	3,229,269

SOURCE: Department of Research & Scientific Affairs, American Academy of Orthopaedic Surgeons. Rosemont, IL; AAOS; November 2013. Physician Visits: Reason for Visit - Based on data from the National Ambulatory Medical Care Survey, 2000-2010; National Center for Health Statistics.

¹Estimates are based on the "principal" or "most important reason" for visit.

Information About the Arm

Estimates reflect the number of physician visits¹ for arm symptoms and complaints (by sex)



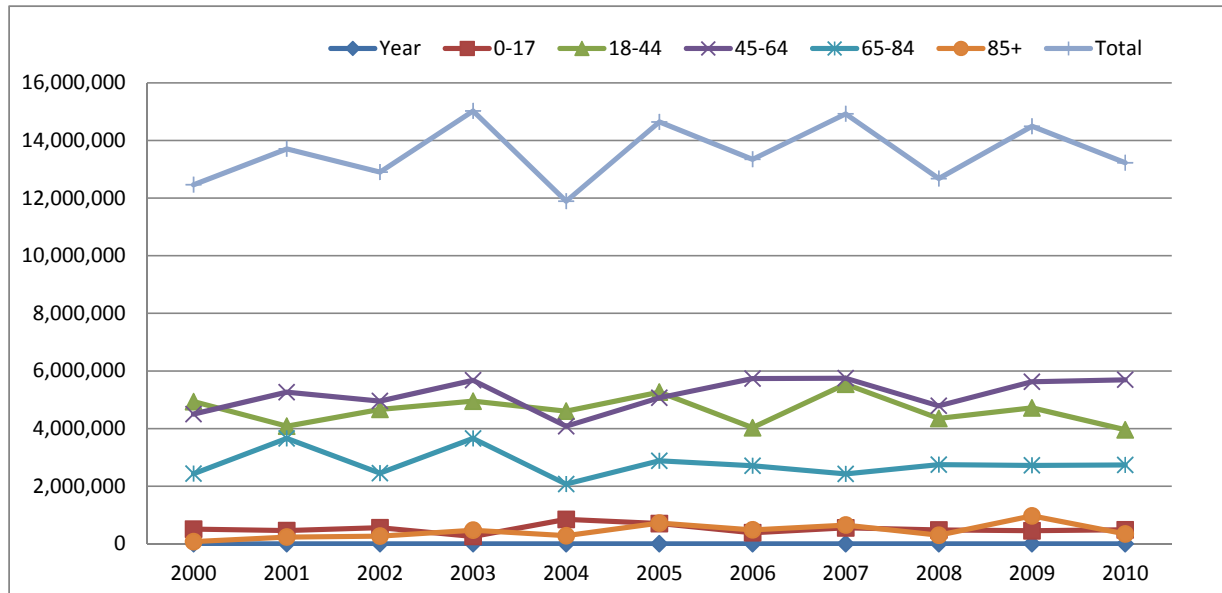
Year	Women	Men	Total
2000	2,483,736	1,932,579	4,416,315
2001	2,936,167	1,207,697	4,143,864
2002	2,011,818	1,333,902	3,345,720
2003	1,565,860	1,176,177	2,742,037
2004	1,654,754	1,502,647	3,157,401
2005	1,874,088	1,260,544	3,134,632
2006	1,302,894	1,263,933	2,566,827
2007	1,797,093	732,084	2,529,177
2008	2,546,854	1,166,529	3,713,383
2009	1,680,674	1,688,581	3,369,255
2010	1,815,450	1,413,819	3,229,269

SOURCE: Department of Research & Scientific Affairs, American Academy of Orthopaedic Surgeons. Rosemont, IL; AAOS; November 2013. Physician Visits: Reason for Visit - Based on data from the National Ambulatory Medical Care Survey, 2000-2010; National Center for Health Statistics.

¹Estimates are based on the "principal" or "most important reason" for visit.

Information About the Back

Estimates reflect the number of physician visits¹ for back symptoms and complaints (by age group)



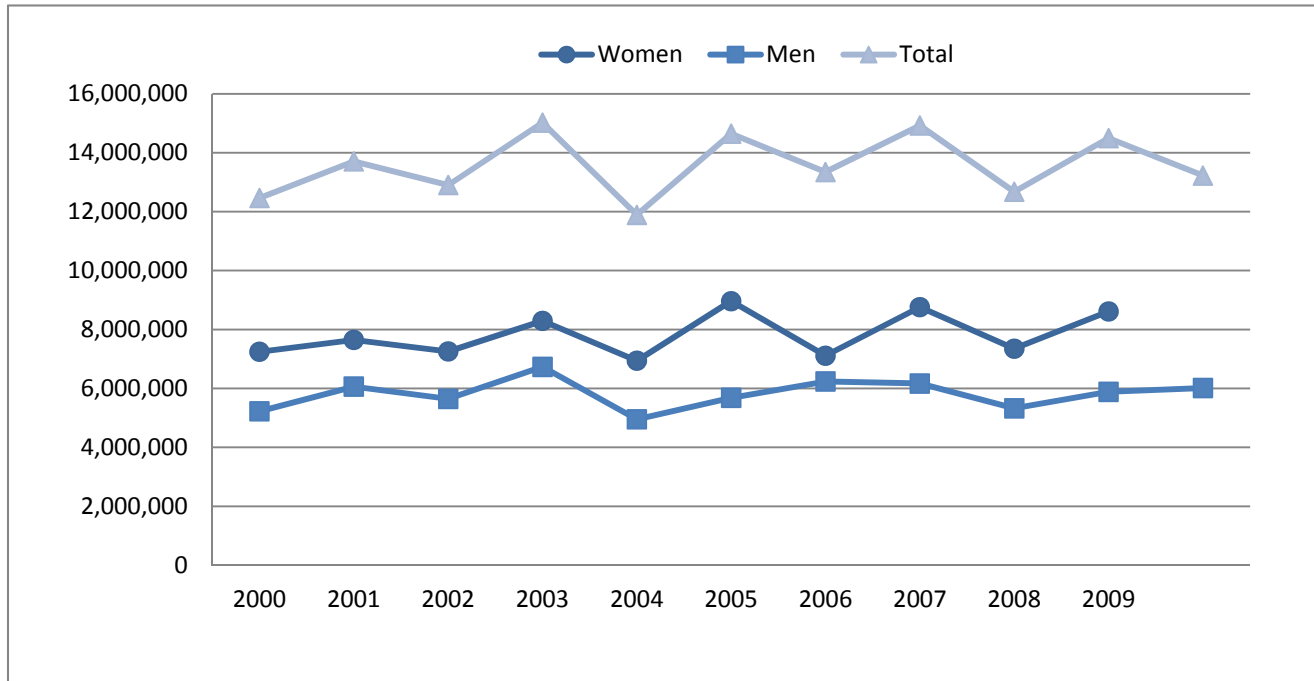
Year	0-17	18-44	45-64	65-84	85+	Total
2000	511,696	4,935,463	4,505,008	2,434,965	76,875	12,464,007
2001	460,166	4,084,108	5,265,761	3,660,853	235,758	13,706,646
2002	558,654	4,666,432	4,955,263	2,453,340	268,681	12,902,370
2003	257,897	4,952,378	5,677,402	3,660,086	474,738	15,022,501
2004	848,707	4,605,224	4,081,158	2,074,055	282,490	11,891,634
2005	703,492	5,267,526	5,071,281	2,880,163	720,688	14,643,150
2006	384,976	4,029,668	5,736,254	2,710,104	485,164	13,346,166
2007	552,932	5,540,102	5,749,740	2,427,398	652,345	14,922,517
2008	482,268	4,353,229	4,789,123	2,750,153	301,080	12,675,853
2009	456,008	4,718,359	5,625,136	2,723,965	971,284	14,494,752
2010	488,903	3,958,763	5,695,052	2,737,902	345,638	13,226,258

SOURCE: Department of Research & Scientific Affairs, American Academy of Orthopaedic Surgeons. Rosemont, IL; AAOS; November 2013. Physician Visits: Reason for Visit - Based on data from the National Ambulatory Medical Care Survey, 2000-2010; National Center for Health Statistics.

¹Estimates are based on the "principal" or "most important reason" for visit.

Information About the Back

Estimates reflect the number of physician visits¹ for back symptoms and complaints (by sex)



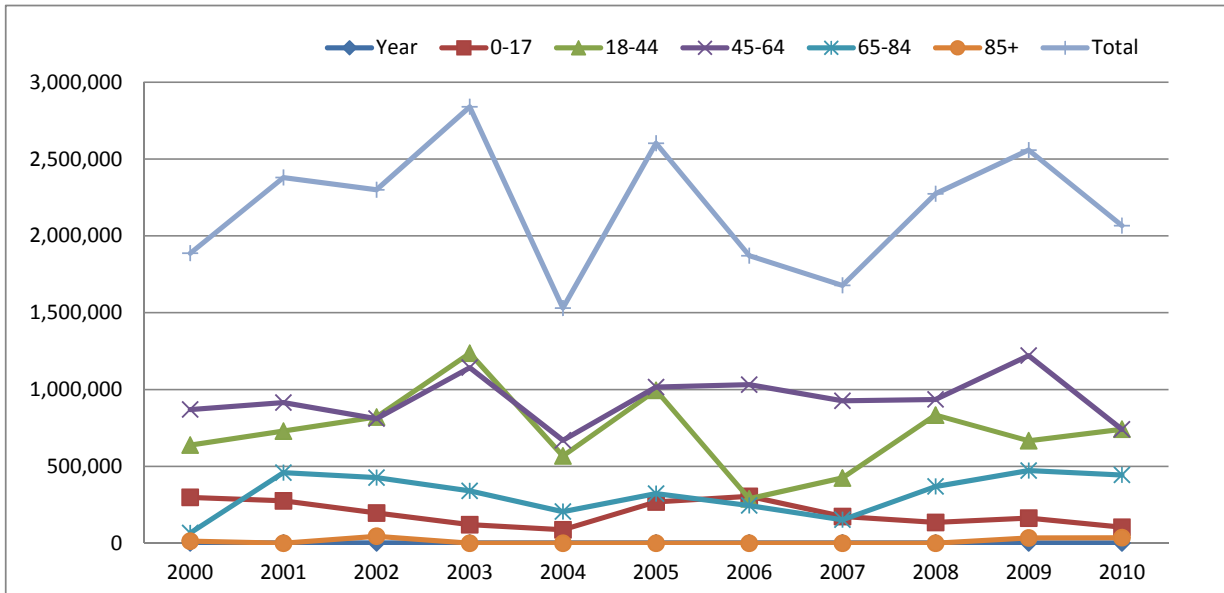
Year	Women	Men	Total
2000	7,243,299	5,220,708	12,464,007
2001	7,645,350	6,061,296	13,706,646
2002	7,255,770	5,646,600	12,902,370
2003	8,291,700	6,730,801	15,022,501
2004	6,940,639	4,950,995	11,891,634
2005	8,962,388	5,680,762	14,643,150
2006	7,111,293	6,234,873	13,346,166
2007	8,756,465	6,166,052	14,922,517
2008	7,350,403	5,325,450	12,675,853
2009	8,611,155	5,883,597	14,494,752
2010	7,214,515	6,011,743	13,226,258

SOURCE: Department of Research & Scientific Affairs, American Academy of Orthopaedic Surgeons. Rosemont, IL; AAOS; November 2013. Physician Visits: Reason for Visit - Based on data from the National Ambulatory Medical Care Survey, 2000-2010; National Center for Health Statistics.

¹Estimates are based on the "principal" or "most important reason" for visit.

Information About the Elbow

Estimates reflect the number of physician visits¹ for elbow symptoms and complaints (by age group)



Year	0-17	18-44	45-64	65-84	85+	Total
2000	298,198	638,699	869,873	66,634	13,785	1,887,189
2001	275,882	730,001	914,822	458,985	0	2,379,690
2002	196,586	821,153	810,408	426,760	45,330	2,300,237
2003	120,634	1,236,467	1,142,733	340,132	0	2,839,966
2004	87,610	567,992	669,518	205,590	0	1,530,710
2005	268,319	995,399	1,016,386	322,555	0	2,602,659
2006	305,310	289,139	1,031,727	245,030	0	1,871,206
2007	173,942	425,048	926,309	152,349	0	1,677,648
2008	135,349	834,123	935,439	369,175	0	2,274,086
2009	163,747	666,819	1,220,777	472,547	34,578	2,558,468
2010	104,294	741,906	740,846	444,095	35,752	2,066,893

SOURCE: Department of Research & Scientific Affairs, American Academy of Orthopaedic Surgeons. Rosemont, IL; AAOS; November 2013. Physician Visits: Reason for Visit - Based on data from the National Ambulatory Medical Care Survey, 2000-2010; National Center for Health Statistics.

¹Estimates are based on the "principal" or "most important reason" for visit.

Information About the Elbow

Estimates reflect the number of physician visits¹ for elbow symptoms and complaints (by sex)



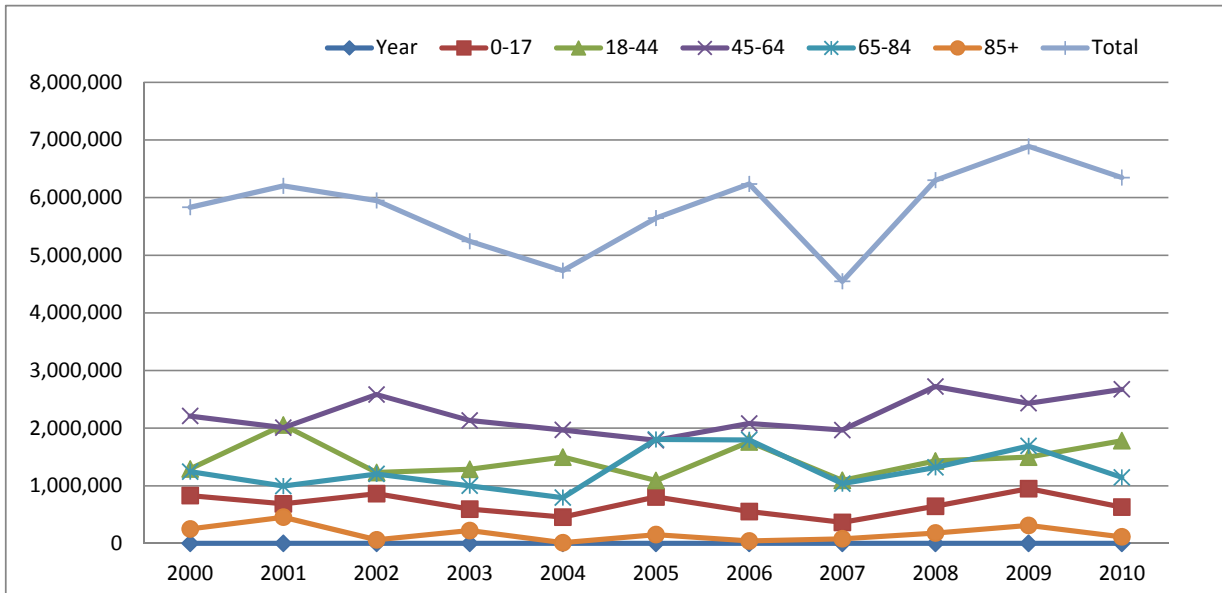
Year	Women	Men	Total
2000	874,887	1,012,302	1,887,189
2001	689,966	1,331,980	2,021,946
2002	895,919	1,404,318	2,300,237
2003	1,372,561	1,467,405	2,839,966
2004	556,785	973,925	1,530,710
2005	1,043,590	1,559,069	2,602,659
2006	764,436	1,106,770	1,871,206
2007	881,656	795,992	1,677,648
2008	1,035,782	1,238,304	2,274,086
2009	906,531	1,651,937	2,558,468
2010	838,458	1,228,435	2,066,893

SOURCE: Department of Research & Scientific Affairs, American Academy of Orthopaedic Surgeons. Rosemont, IL; AAOS; November 2013. Physician Visits: Reason for Visit - Based on data from the National Ambulatory Medical Care Survey, 2000-2010; National Center for Health Statistics.

¹Estimates are based on the "principal" or "most important reason" for visit.

Information About the Foot and Toe

Estimates reflect the number of physician visits¹ for foot and toe symptoms and complaints (by age group)



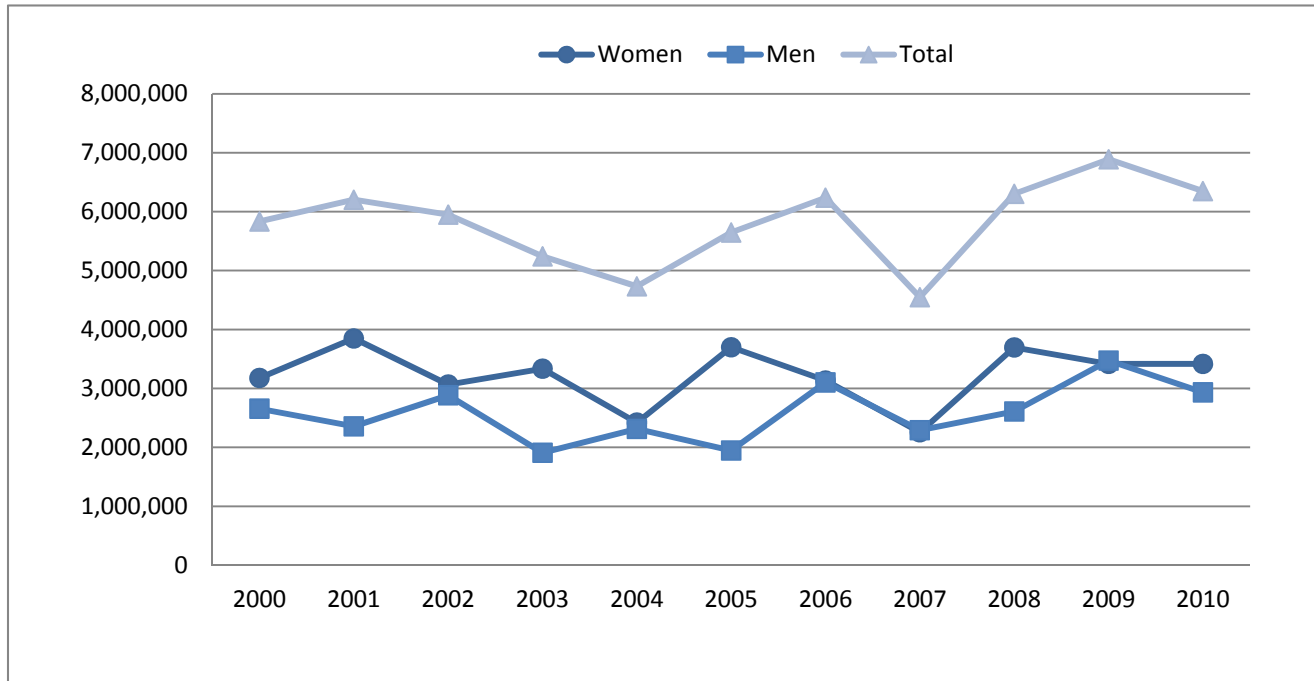
Year	0-17	18-44	45-64	65-84	85+	Total
2000	831,233	1,293,702	2,210,740	1,246,211	251,364	5,833,250
2001	687,486	2,055,051	2,009,130	995,910	455,912	6,203,489
2002	864,552	1,231,147	2,584,732	1,205,733	63,355	5,949,519
2003	596,694	1,286,742	2,134,921	1,000,418	224,396	5,243,171
2004	457,163	1,497,898	1,968,665	794,970	13,764	4,732,460
2005	807,149	1,091,564	1,790,293	1,803,359	153,760	5,646,125
2006	554,772	1,761,607	2,080,565	1,797,083	43,236	6,237,263
2007	366,428	1,094,705	1,967,827	1,037,187	81,678	4,547,825
2008	645,797	1,432,620	2,723,380	1,319,435	181,181	6,302,413
2009	952,253	1,499,192	2,432,730	1,691,502	312,905	6,888,582
2010	630,771	1,783,232	2,673,671	1,146,250	114,592	6,348,516

SOURCE: Department of Research & Scientific Affairs, American Academy of Orthopaedic Surgeons. Rosemont, IL; AAOS; November 2013. Physician Visits: Reason for Visit - Based on data from the National Ambulatory Medical Care Survey, 2000-2010; National Center for Health Statistics.

¹Estimates are based on the "principal" or "most important reason" for visit.

Information About the Foot and Toe

Estimates reflect the number of physician visits¹ for foot and toe symptoms and complaints (by sex)



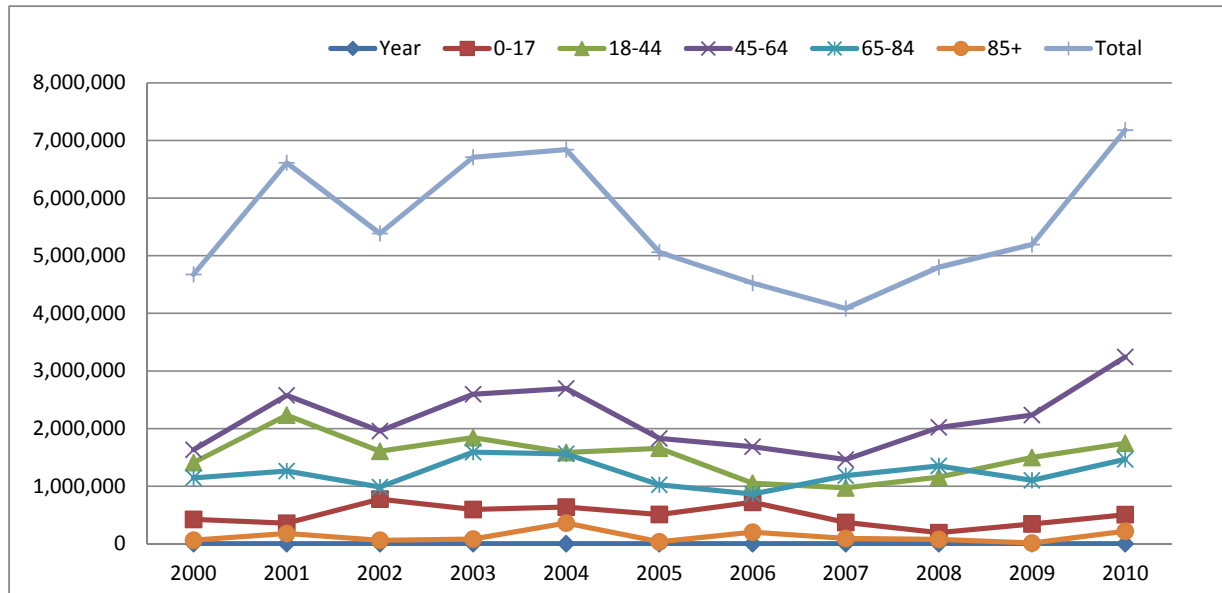
Year	Women	Men	Total
2000	3,177,210	2,656,040	5,833,250
2001	3,848,431	2,355,058	6,203,489
2002	3,065,644	2,883,875	5,949,519
2003	3,334,826	1,908,345	5,243,171
2004	2,420,111	2,312,349	4,732,460
2005	3,699,787	1,946,338	5,646,125
2006	3,134,821	3,102,442	6,237,263
2007	2,255,876	2,291,949	4,547,825
2008	3,694,523	2,607,890	6,302,413
2009	3,416,372	3,472,210	6,888,582
2010	3,415,655	2,932,861	6,348,516

SOURCE: Department of Research & Scientific Affairs, American Academy of Orthopaedic Surgeons. Rosemont, IL; AAOS; November 2013. Physician Visits: Reason for Visit - Based on data from the National Ambulatory Medical Care Survey, 2000-2010; National Center for Health Statistics.

¹Estimates are based on the "principal" or "most important reason" for visit.

Information About the Hand and Finger

Estimates reflect the number of physician visits¹ for hand and finger symptoms and complaints (by age group)



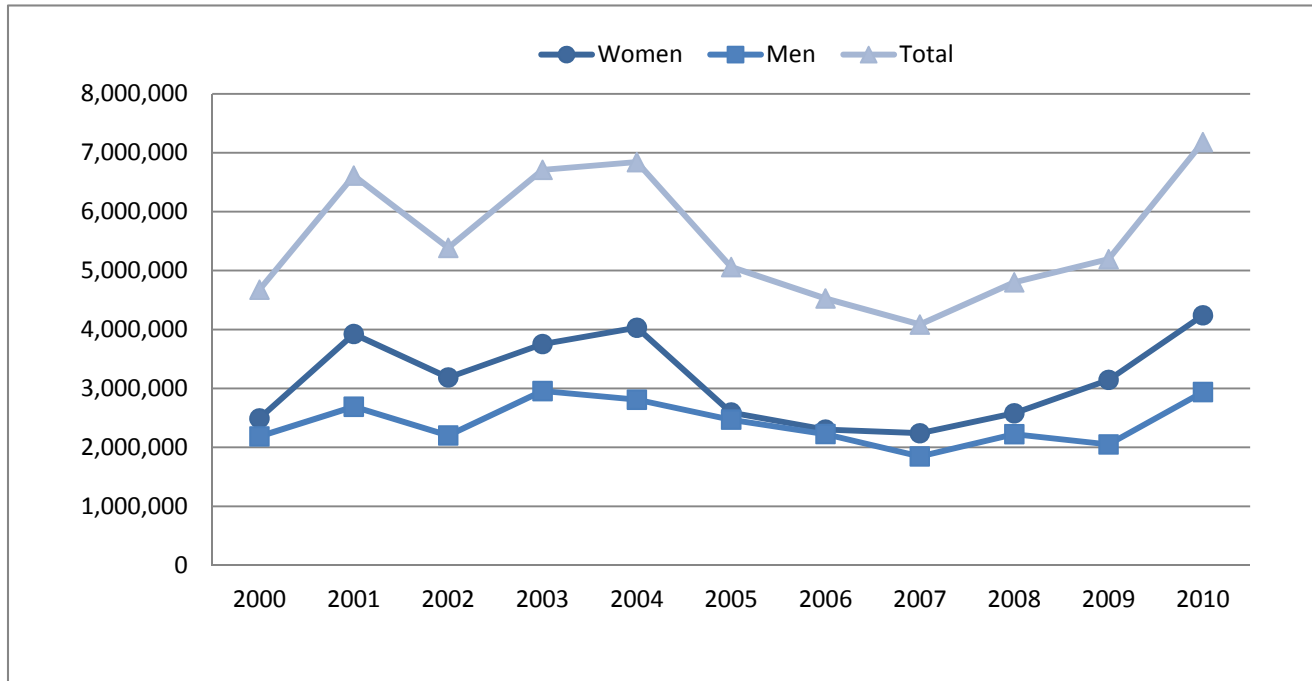
Year	0-17	18-44	45-64	65-84	85+	Total
2000	423,814	1,410,274	1,633,093	1,145,276	63,100	4,675,557
2001	358,503	2,233,832	2,575,728	1,263,733	180,050	6,611,846
2002	775,601	1,606,884	1,956,438	985,300	62,006	5,386,229
2003	596,737	1,842,998	2,595,593	1,591,650	82,196	6,709,174
2004	638,149	1,585,414	2,695,079	1,561,561	360,436	6,840,639
2005	509,373	1,659,203	1,829,465	1,025,050	36,674	5,059,765
2006	722,141	1,051,849	1,684,780	864,484	202,090	4,525,344
2007	371,775	971,617	1,463,320	1,183,204	94,820	4,084,736
2008	193,625	1,158,171	2,019,322	1,351,550	77,660	4,800,328
2009	345,826	1,498,359	2,234,696	1,102,541	12,783	5,194,205
2010	506,256	1,745,954	3,243,319	1,465,153	219,690	7,180,372

SOURCE: Department of Research & Scientific Affairs, American Academy of Orthopaedic Surgeons. Rosemont, IL; AAOS; November 2013. Physician Visits: Reason for Visit - Based on data from the National Ambulatory Medical Care Survey, 2000-2010; National Center for Health Statistics.

¹Estimates are based on the "principal" or "most important reason" for visit.

Information About the Hand and Finger

Estimates reflect the number of physician visits¹ for hand and finger symptoms and complaints (by sex)



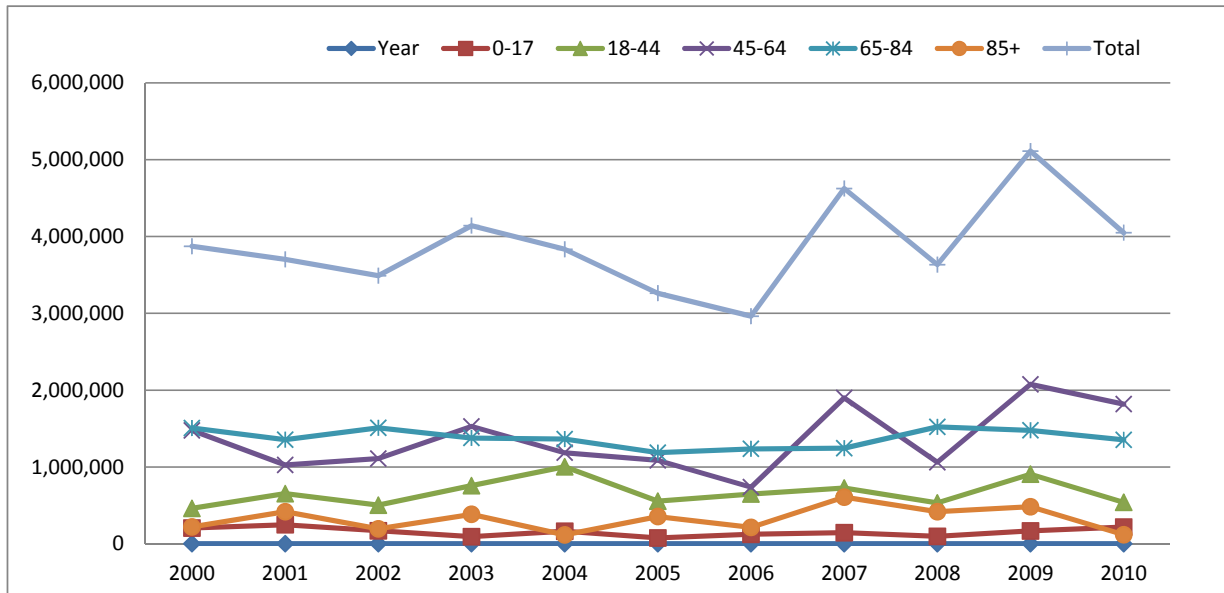
Year	Women	Men	Total
2000	2,491,075	2,184,482	4,675,557
2001	3,922,459	2,689,387	6,611,846
2002	3,185,638	2,200,591	5,386,229
2003	3,752,751	2,956,423	6,709,174
2004	4,030,789	2,809,850	6,840,639
2005	2,591,009	2,468,756	5,059,765
2006	2,301,064	2,224,280	4,525,344
2007	2,239,284	1,845,452	4,084,736
2008	2,578,258	2,222,070	4,800,328
2009	3,143,840	2,050,365	5,194,205
2010	4,241,632	2,938,740	7,180,372

SOURCE: Department of Research & Scientific Affairs, American Academy of Orthopaedic Surgeons. Rosemont, IL; AAOS; November 2013. Physician Visits: Reason for Visit - Based on data from the National Ambulatory Medical Care Survey, 2000-2010; National Center for Health Statistics.

¹Estimates are based on the "principal" or "most important reason" for visit.

Information About the Hip

Estimates reflect the number of physician visits¹ for hip symptoms and complaints (by age group)



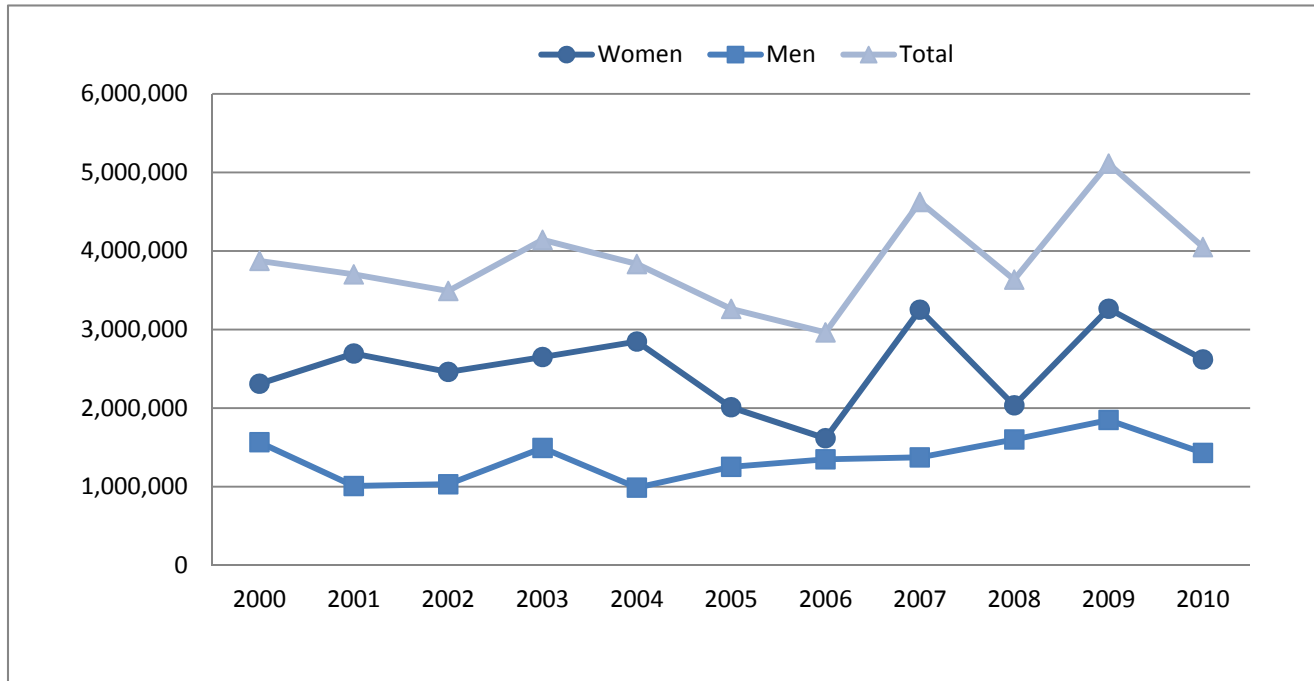
Year	0-17	18-44	45-64	65-84	85+	Total
2000	206,236	462,492	1,476,935	1,506,826	221,155	3,873,644
2001	248,589	653,453	1,027,075	1,355,191	417,744	3,702,052
2002	171,230	504,268	1,109,335	1,509,117	195,817	3,489,767
2003	93,520	757,635	1,528,508	1,377,576	383,845	4,141,084
2004	164,903	1,003,024	1,185,699	1,363,433	116,701	3,833,760
2005	76,924	555,869	1,087,214	1,186,873	355,076	3,261,956
2006	125,048	648,466	738,252	1,236,025	214,755	2,962,546
2007	146,332	726,670	1,898,761	1,245,366	607,242	4,624,371
2008	97,650	532,827	1,062,055	1,522,707	418,673	3,633,912
2009	168,523	906,911	2,075,990	1,477,349	482,781	5,111,554
2010	218,470	540,456	1,818,857	1,353,413	118,215	4,049,411

SOURCE: Department of Research & Scientific Affairs, American Academy of Orthopaedic Surgeons. Rosemont, IL; AAOS; November 2013. Physician Visits: Reason for Visit - Based on data from the National Ambulatory Medical Care Survey, 2000-2010; National Center for Health Statistics.

¹Estimates are based on the "principal" or "most important reason" for visit.

Information About the Hip

Estimates reflect the number of physician visits¹ for hip symptoms and complaints (by sex)



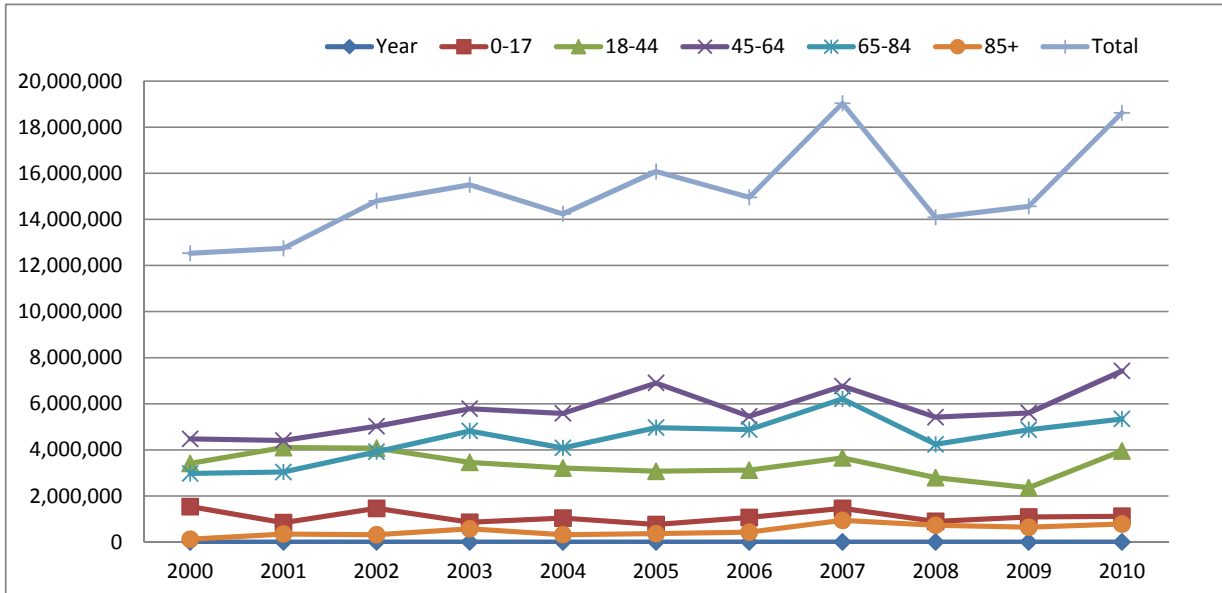
Year	Women	Men	Total
2000	2,309,250	1,564,394	3,873,644
2001	2,693,804	1,008,248	3,702,052
2002	2,460,110	1,029,657	3,489,767
2003	2,649,517	1,491,567	4,141,084
2004	2,846,961	986,799	3,833,760
2005	2,010,547	1,251,409	3,261,956
2006	1,615,367	1,347,179	2,962,546
2007	3,252,381	1,371,990	4,624,371
2008	2,034,533	1,599,379	3,633,912
2009	3,264,061	1,847,493	5,111,554
2010	2,619,552	1,429,859	4,049,411

SOURCE: Department of Research & Scientific Affairs, American Academy of Orthopaedic Surgeons. Rosemont, IL; AAOS; November 2013. Physician Visits: Reason for Visit - Based on data from the National Ambulatory Medical Care Survey, 2000-2010; National Center for Health Statistics.

¹Estimates are based on the "principal" or "most important reason" for visit.

Information About the Knee

Estimates reflect the number of physician visits¹ for knee symptoms and complaints (by age group)



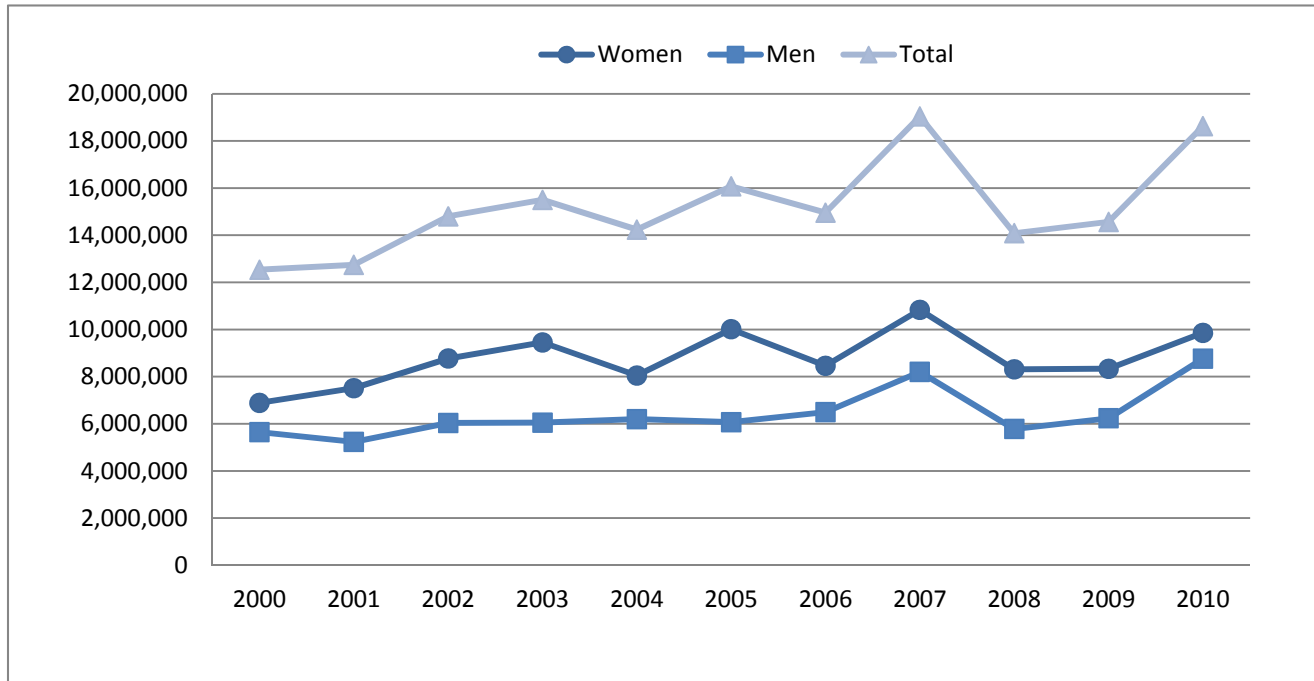
Year	0-17	18-44	45-64	65-84	85+	Total
2000	1,542,483	3,415,478	4,476,257	2,976,622	122,525	12,533,365
2001	842,688	4,099,869	4,408,160	3,042,023	350,023	12,742,763
2002	1,465,454	4,074,300	5,027,085	3,918,731	317,245	14,802,815
2003	859,908	3,458,774	5,785,944	4,819,648	576,494	15,500,768
2004	1,038,577	3,211,272	5,583,002	4,085,273	322,455	14,240,579
2005	763,961	3,074,421	6,902,029	4,966,071	369,023	16,075,505
2006	1,068,720	3,121,985	5,457,260	4,880,649	428,024	14,956,638
2007	1,463,034	3,653,834	6,766,694	6,212,349	941,658	19,037,569
2008	899,234	2,794,588	5,419,731	4,241,054	731,237	14,085,844
2009	1,087,645	2,360,837	5,603,600	4,871,786	642,593	14,566,461
2010	1,121,209	3,957,505	7,422,228	5,340,681	781,993	18,623,616

SOURCE: Department of Research & Scientific Affairs, American Academy of Orthopaedic Surgeons. Rosemont, IL; AAOS; November 2013. Physician Visits: Reason for Visit - Based on data from the National Ambulatory Medical Care Survey, 2000-2010; National Center for Health Statistics.

¹Estimates are based on the "principal" or "most important reason" for visit.

Information About the Knee

Estimates reflect the number of physician visits¹ for knee symptoms and complaints (by sex)



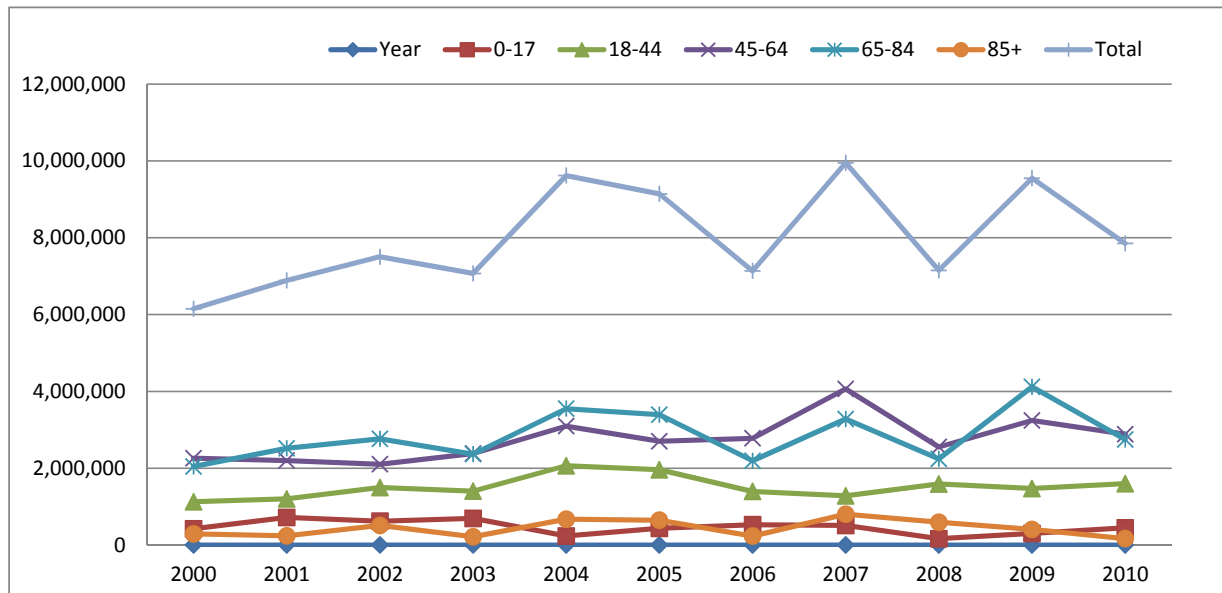
Year	Women	Men	Total
2000	6,889,334	5,644,031	12,533,365
2001	7,512,585	5,230,178	12,742,763
2002	8,770,102	6,032,713	14,802,815
2003	9,452,346	6,048,422	15,500,768
2004	8,046,417	6,194,162	14,240,579
2005	10,010,169	6,065,336	16,075,505
2006	8,462,734	6,493,904	14,956,638
2007	10,835,811	8,201,758	19,037,569
2008	8,307,216	5,778,628	14,085,844
2009	8,333,203	6,233,258	14,566,461
2010	9,859,833	8,763,783	18,623,616

SOURCE: Department of Research & Scientific Affairs, American Academy of Orthopaedic Surgeons. Rosemont, IL; AAOS; November 2013. Physician Visits: Reason for Visit - Based on data from the National Ambulatory Medical Care Survey, 2000-2010; National Center for Health Statistics.

¹Estimates are based on the "principal" or "most important reason" for visit.

Information About the Leg

Estimates reflect the number of physician visits¹ for leg symptoms and complaints (by age group)



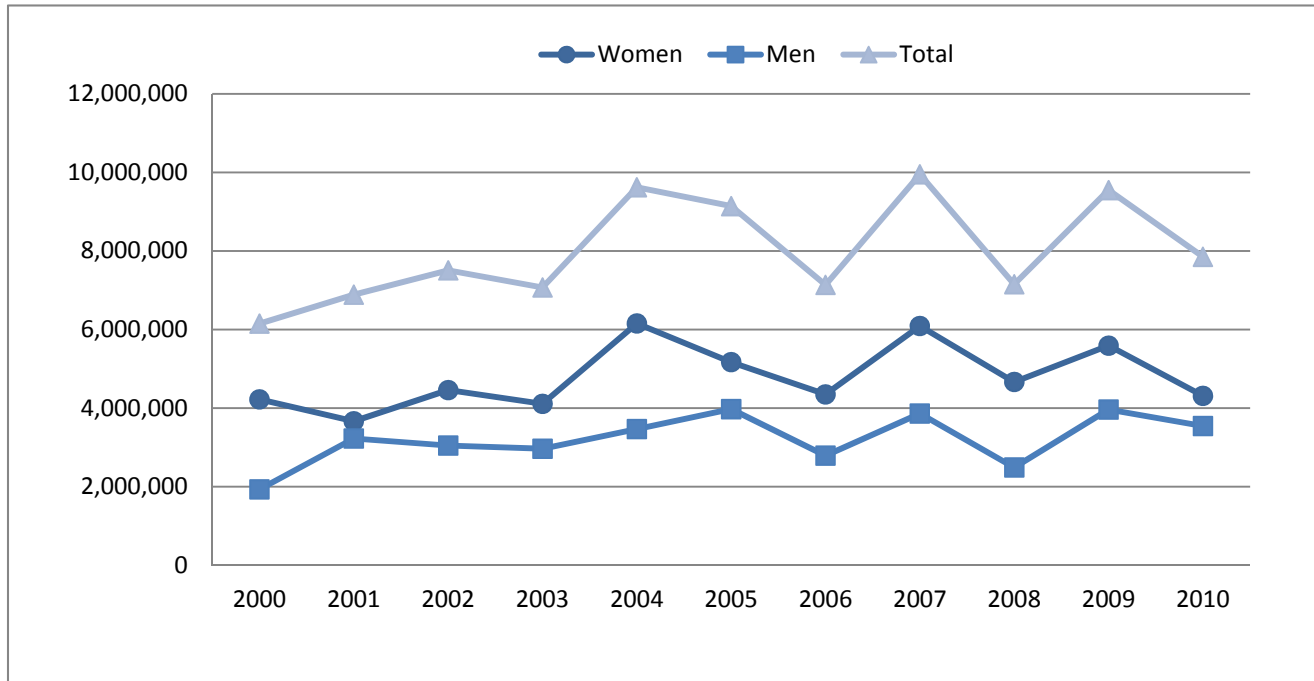
Year	0-17	18-44	45-64	65-84	85+	Total
2000	425,560	1,128,844	2,260,680	2,043,749	291,261	6,150,094
2001	719,463	1,204,101	2,201,300	2,519,758	242,571	6,887,193
2002	621,873	1,500,320	2,105,473	2,764,997	511,206	7,503,869
2003	695,976	1,405,727	2,384,576	2,367,500	217,224	7,071,003
2004	235,812	2,064,565	3,095,997	3,549,653	673,146	9,619,173
2005	437,818	1,961,637	2,702,948	3,393,356	646,832	9,142,591
2006	530,262	1,397,022	2,779,513	2,193,849	235,447	7,136,093
2007	512,254	1,283,449	4,065,781	3,282,512	804,821	9,948,817
2008	167,465	1,591,847	2,554,807	2,243,244	593,965	7,151,328
2009	304,088	1,474,882	3,243,328	4,118,580	408,938	9,549,816
2010	448,581	1,600,178	2,886,997	2,748,485	168,770	7,853,011

SOURCE: Department of Research & Scientific Affairs, American Academy of Orthopaedic Surgeons. Rosemont, IL; AAOS; November 2013. Physician Visits: Reason for Visit - Based on data from the National Ambulatory Medical Care Survey, 2000-2010; National Center for Health Statistics.

¹Estimates are based on the "principal" or "most important reason" for visit.

Information About the Leg

Estimates reflect the number of physician visits¹ for leg symptoms and complaints (by sex)



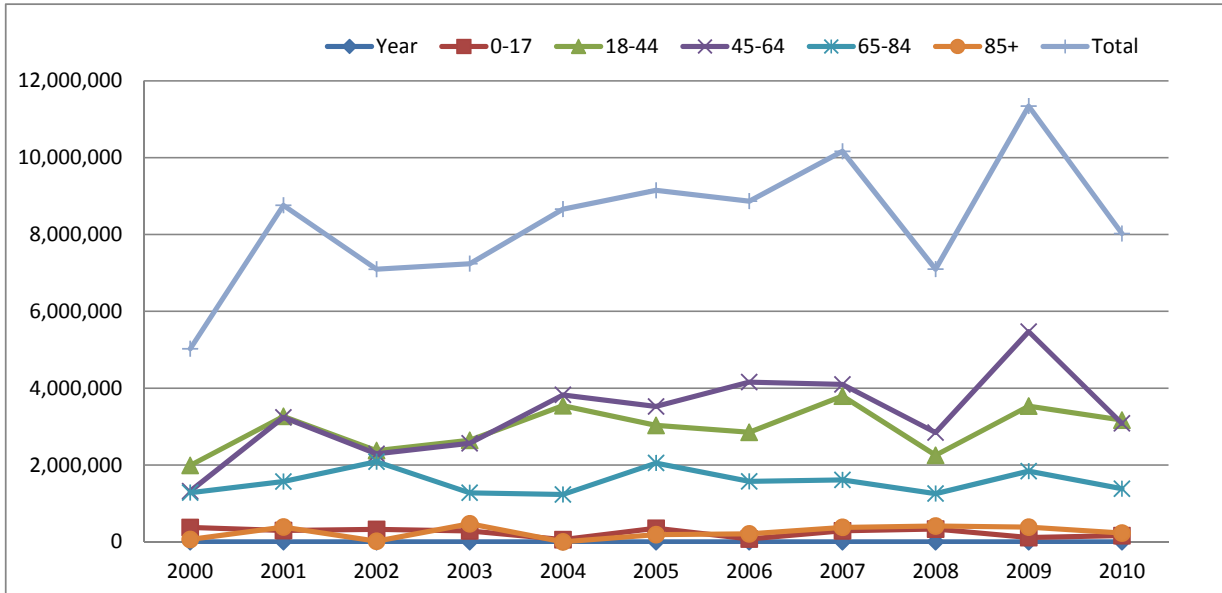
Year	Women	Men	Total
2000	4,220,838	1,929,256	6,150,094
2001	3,663,187	3,224,006	6,887,193
2002	4,457,090	3,046,779	7,503,869
2003	4,107,652	2,963,351	7,071,003
2004	6,154,731	3,464,442	9,619,173
2005	5,167,556	3,975,035	9,142,591
2006	4,348,434	2,787,659	7,136,093
2007	6,088,276	3,860,541	9,948,817
2008	4,664,216	2,487,112	7,151,328
2009	5,589,715	3,960,101	9,549,816
2010	4,311,859	3,541,152	7,853,011

SOURCE: Department of Research & Scientific Affairs, American Academy of Orthopaedic Surgeons. Rosemont, IL; AAOS; November 2013. Physician Visits: Reason for Visit - Based on data from the National Ambulatory Medical Care Survey, 2000-2010; National Center for Health Statistics.

¹Estimates are based on the "principal" or "most important reason" for visit.

Information About the Low Back

Estimates reflect the number of physician visits¹ for low back symptoms and complaints (by age group)



Year	0-17	18-44	45-64	65-84	85+	Total
2000	374,370	1,989,851	1,319,014	1,280,052	63,005	5,026,292
2001	296,644	3,267,543	3,241,185	1,570,878	384,725	8,760,975
2002	325,945	2,375,669	2,291,599	2,086,675	15,426	7,095,314
2003	285,124	2,643,541	2,564,564	1,276,772	469,931	7,239,932
2004	58,471	3,544,861	3,824,508	1,232,421	0	8,660,261
2005	354,305	3,031,466	3,524,506	2,050,332	188,485	9,149,094
2006	74,443	2,852,654	4,158,759	1,575,085	207,944	8,868,885
2007	287,148	3,794,838	4,096,552	1,612,138	376,501	10,167,177
2008	333,671	2,252,770	2,843,494	1,255,160	412,762	7,097,857
2009	113,564	3,533,515	5,472,474	1,841,326	382,373	11,343,252
2010	162,731	3,168,114	3,083,859	1,381,079	228,406	8,024,189

SOURCE: Department of Research & Scientific Affairs, American Academy of Orthopaedic Surgeons. Rosemont, IL; AAOS; November 2013. Physician Visits: Reason for Visit - Based on data from the National Ambulatory Medical Care Survey, 2000-2010; National Center for Health Statistics.

¹Estimates are based on the "principal" or "most important reason" for visit.

Information About the Low Back

Estimates reflect the number of physician visits¹ for low back symptoms and complaints (by sex)



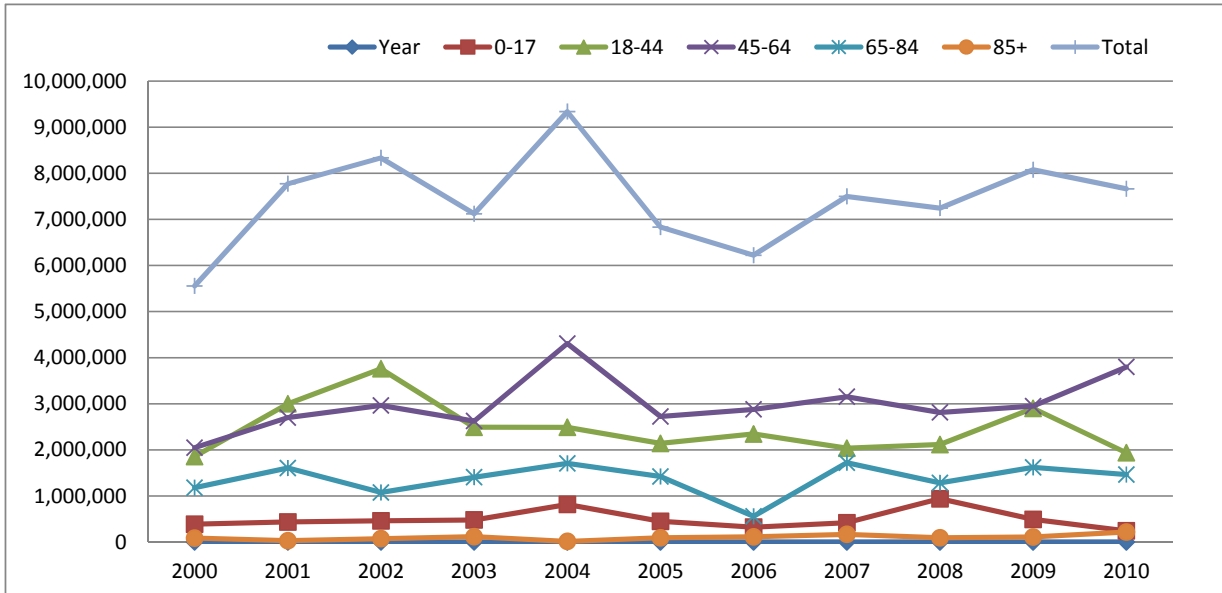
Year	Women	Men	Total
2000	2,577,231	2,449,061	5,026,292
2001	4,739,964	4,021,011	8,760,975
2002	4,223,329	2,871,985	7,095,314
2003	4,166,584	3,073,348	7,239,932
2004	5,052,852	3,607,409	8,660,261
2005	4,514,024	4,635,070	9,149,094
2006	4,727,812	4,141,073	8,868,885
2007	5,760,253	4,406,924	10,167,177
2008	4,107,170	2,990,687	7,097,857
2009	5,555,533	5,787,719	11,343,252
2010	4,121,206	3,902,983	8,024,189

SOURCE: Department of Research & Scientific Affairs, American Academy of Orthopaedic Surgeons. Rosemont, IL; AAOS; November 2013. Physician Visits: Reason for Visit - Based on data from the National Ambulatory Medical Care Survey, 2000-2010; National Center for Health Statistics.

¹Estimates are based on the "principal" or "most important reason" for visit.

Information About the Neck

Estimates reflect the number of physician visits¹ for neck symptoms and complaints (by age group)



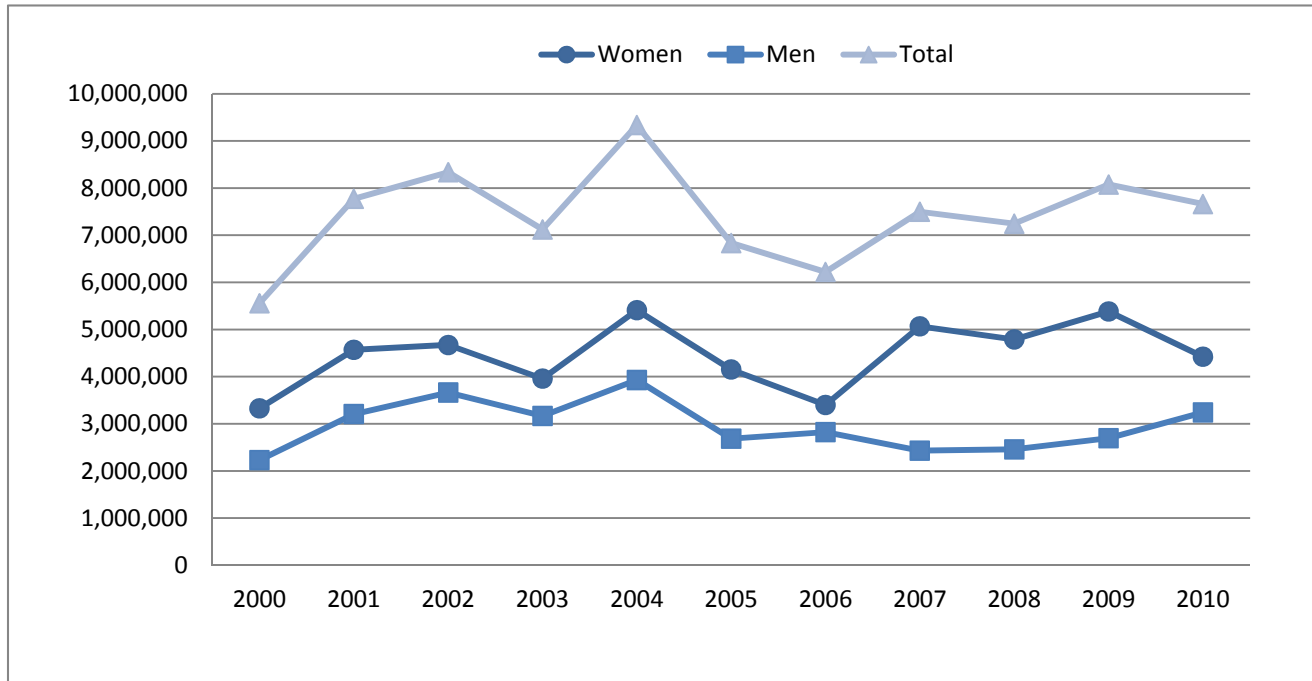
Year	0-17	18-44	45-64	65-84	85+	Total
2000	389,131	1,856,135	2,046,559	1,179,466	85,448	5,556,739
2001	436,289	2,999,649	2,699,368	1,607,257	30,314	7,772,877
2002	460,637	3,760,253	2,962,770	1,076,850	74,477	8,334,987
2003	480,488	2,491,256	2,625,024	1,407,430	118,175	7,122,373
2004	817,478	2,489,843	4,306,966	1,707,877	15,830	9,337,994
2005	451,481	2,142,010	2,724,614	1,422,003	94,137	6,834,245
2006	324,487	2,345,827	2,878,979	558,258	114,399	6,221,950
2007	418,465	2,036,528	3,153,000	1,721,873	168,243	7,498,109
2008	940,481	2,115,766	2,812,983	1,282,762	92,308	7,244,300
2009	492,117	2,902,338	2,948,893	1,621,532	110,797	8,075,677
2010	244,821	1,937,676	3,798,042	1,464,207	217,781	7,662,527

SOURCE: Department of Research & Scientific Affairs, American Academy of Orthopaedic Surgeons. Rosemont, IL; AAOS; November 2013. Physician Visits: Reason for Visit - Based on data from the National Ambulatory Medical Care Survey, 2000-2010; National Center for Health Statistics.

¹Estimates are based on the "principal" or "most important reason" for visit.

Information About the Neck

Estimates reflect the number of physician visits¹ for neck symptoms and complaints (by sex)



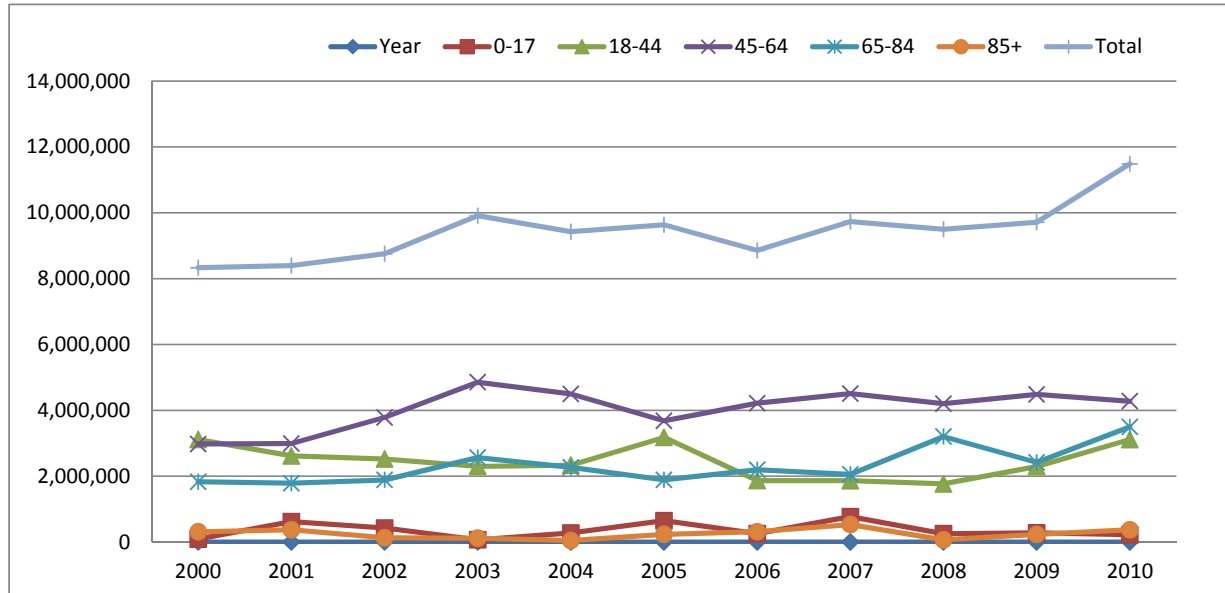
Year	Women	Men	Total
2000	3,328,448	2,228,291	5,556,739
2001	4,568,501	3,204,376	7,772,877
2002	4,672,019	3,662,968	8,334,987
2003	3,957,324	3,165,049	7,122,373
2004	5,409,630	3,928,364	9,337,994
2005	4,151,183	2,683,062	6,834,245
2006	3,399,576	2,822,374	6,221,950
2007	5,067,614	2,430,495	7,498,109
2008	4,788,030	2,456,270	7,244,300
2009	5,382,271	2,693,406	8,075,677
2010	4,422,920	3,239,607	7,662,527

SOURCE: Department of Research & Scientific Affairs, American Academy of Orthopaedic Surgeons. Rosemont, IL; AAOS; November 2013. Physician Visits: Reason for Visit - Based on data from the National Ambulatory Medical Care Survey, 2000-2010; National Center for Health Statistics.

¹Estimates are based on the "principal" or "most important reason" for visit.

Information About the Shoulder

Estimates reflect the number of physician visits¹ for shoulder symptoms and complaints (by age group)



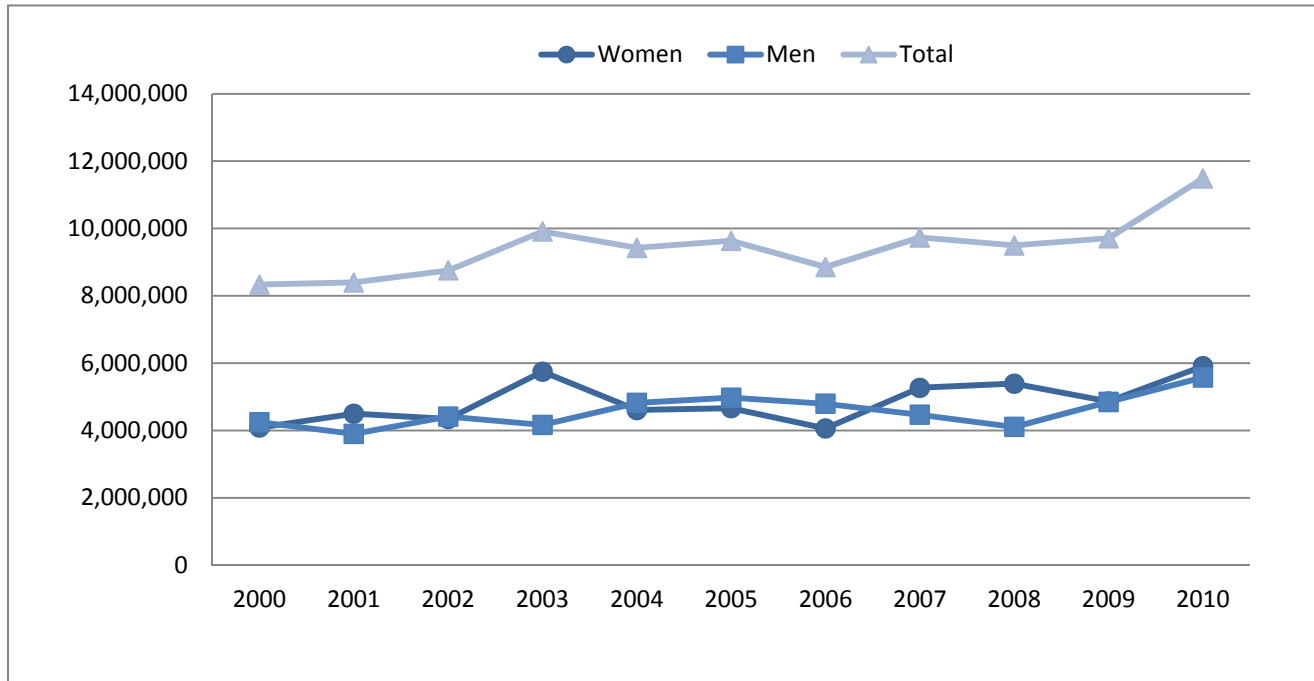
Year	0-17	18-44	45-64	65-84	85+	Total
2000	93,359	3,116,549	2,979,257	1,830,853	312,592	8,332,610
2001	622,002	2,619,749	2,992,544	1,788,981	373,742	8,397,018
2002	426,132	2,523,555	3,784,367	1,887,995	131,942	8,753,991
2003	70,442	2,300,695	4,856,614	2,566,507	118,233	9,912,491
2004	275,892	2,334,668	4,498,183	2,270,173	47,740	9,426,656
2005	649,579	3,180,571	3,681,972	1,888,199	235,969	9,636,290
2006	258,392	1,868,009	4,217,756	2,195,310	316,667	8,856,134
2007	771,457	1,864,203	4,510,148	2,057,318	531,481	9,734,607
2008	254,639	1,769,368	4,201,724	3,204,255	68,489	9,498,475
2009	282,596	2,295,689	4,483,908	2,417,821	232,526	9,712,540
2010	222,362	3,114,116	4,278,107	3,498,674	374,384	11,487,643

SOURCE: Department of Research & Scientific Affairs, American Academy of Orthopaedic Surgeons. Rosemont, IL; AAOS; November 2013. Physician Visits: Reason for Visit - Based on data from the National Ambulatory Medical Care Survey, 2000-2010; National Center for Health Statistics.

¹Estimates are based on the "principal" or "most important reason" for visit.

Information About the Shoulder

Estimates reflect the number of physician visits¹ for shoulder symptoms and complaints (by sex)



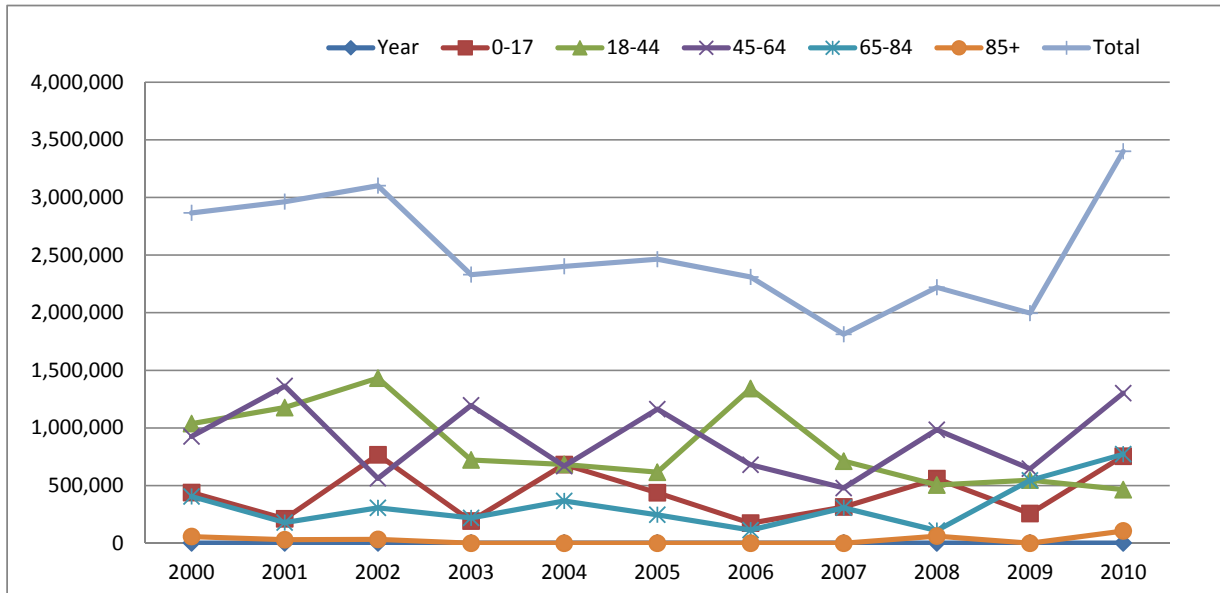
Year	Women	Men	Total
2000	4,087,269	4,245,341	8,332,610
2001	4,496,829	3,900,189	8,397,018
2002	4,340,339	4,413,652	8,753,991
2003	5,746,694	4,165,797	9,912,491
2004	4,607,576	4,819,080	9,426,656
2005	4,662,765	4,973,525	9,636,290
2006	4,061,498	4,794,636	8,856,134
2007	5,266,928	4,467,679	9,734,607
2008	5,392,304	4,106,171	9,498,475
2009	4,862,985	4,849,555	9,712,540
2010	5,911,032	5,576,611	11,487,643

SOURCE: Department of Research & Scientific Affairs, American Academy of Orthopaedic Surgeons. Rosemont, IL; AAOS; November 2013. Physician Visits: Reason for Visit - Based on data from the National Ambulatory Medical Care Survey, 2000-2010; National Center for Health Statistics.

¹Estimates are based on the "principal" or "most important reason" for visit.

Information About the Wrist

Estimates reflect the number of physician visits¹ for wrist symptoms and complaints (by age group)



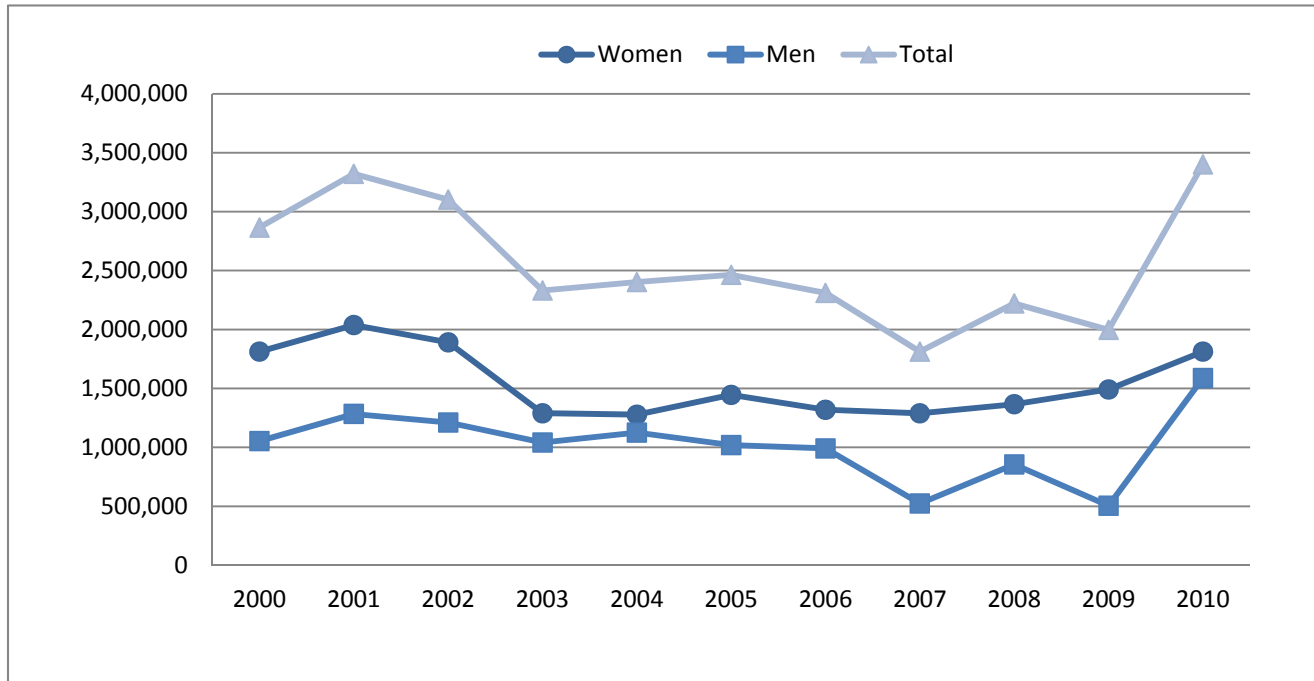
Year	0-17	18-44	45-64	65-84	85+	Total
2000	440,305	1,037,631	925,616	404,988	57,323	2,865,863
2001	212,770	1,177,213	1,363,770	178,896	30,705	2,963,354
2002	767,493	1,432,540	562,630	306,573	32,725	3,101,961
2003	192,937	722,415	1,195,724	219,241	0	2,330,317
2004	683,224	683,615	669,128	366,237	0	2,402,204
2005	437,978	616,744	1,163,073	246,330	0	2,464,125
2006	174,097	1,341,627	680,413	114,046	0	2,310,183
2007	314,504	711,775	478,937	307,340	0	1,812,556
2008	559,991	505,198	984,546	109,102	61,795	2,220,632
2009	257,607	547,602	646,117	545,261	0	1,996,587
2010	755,429	464,554	1,301,936	772,504	105,974	3,400,397

SOURCE: Department of Research & Scientific Affairs, American Academy of Orthopaedic Surgeons. Rosemont, IL; AAOS; November 2013. Physician Visits: Reason for Visit - Based on data from the National Ambulatory Medical Care Survey, 2000-2010; National Center for Health Statistics.

¹Estimates are based on the "principal" or "most important reason" for visit.

Information About the Wrist

Estimates reflect the number of physician visits¹ for wrist symptoms and complaints (by sex)



Year	Women	Men	Total
2000	1,812,486	1,053,377	2,865,863
2001	2,037,803	1,283,295	3,321,098
2002	1,890,899	1,211,062	3,101,961
2003	1,289,051	1,041,266	2,330,317
2004	1,276,709	1,125,495	2,402,204
2005	1,445,441	1,018,684	2,464,125
2006	1,318,916	991,267	2,310,183
2007	1,288,688	523,868	1,812,556
2008	1,365,750	854,882	2,220,632
2009	1,491,859	504,728	1,996,587
2010	1,812,767	1,587,630	3,400,397

SOURCE: Department of Research & Scientific Affairs, American Academy of Orthopaedic Surgeons. Rosemont, IL; AAOS; November 2013. Physician Visits: Reason for Visit - Based on data from the National Ambulatory Medical Care Survey, 2000-2010; National Center for Health Statistics.

¹Estimates are based on the "principal" or "most important reason" for visit.